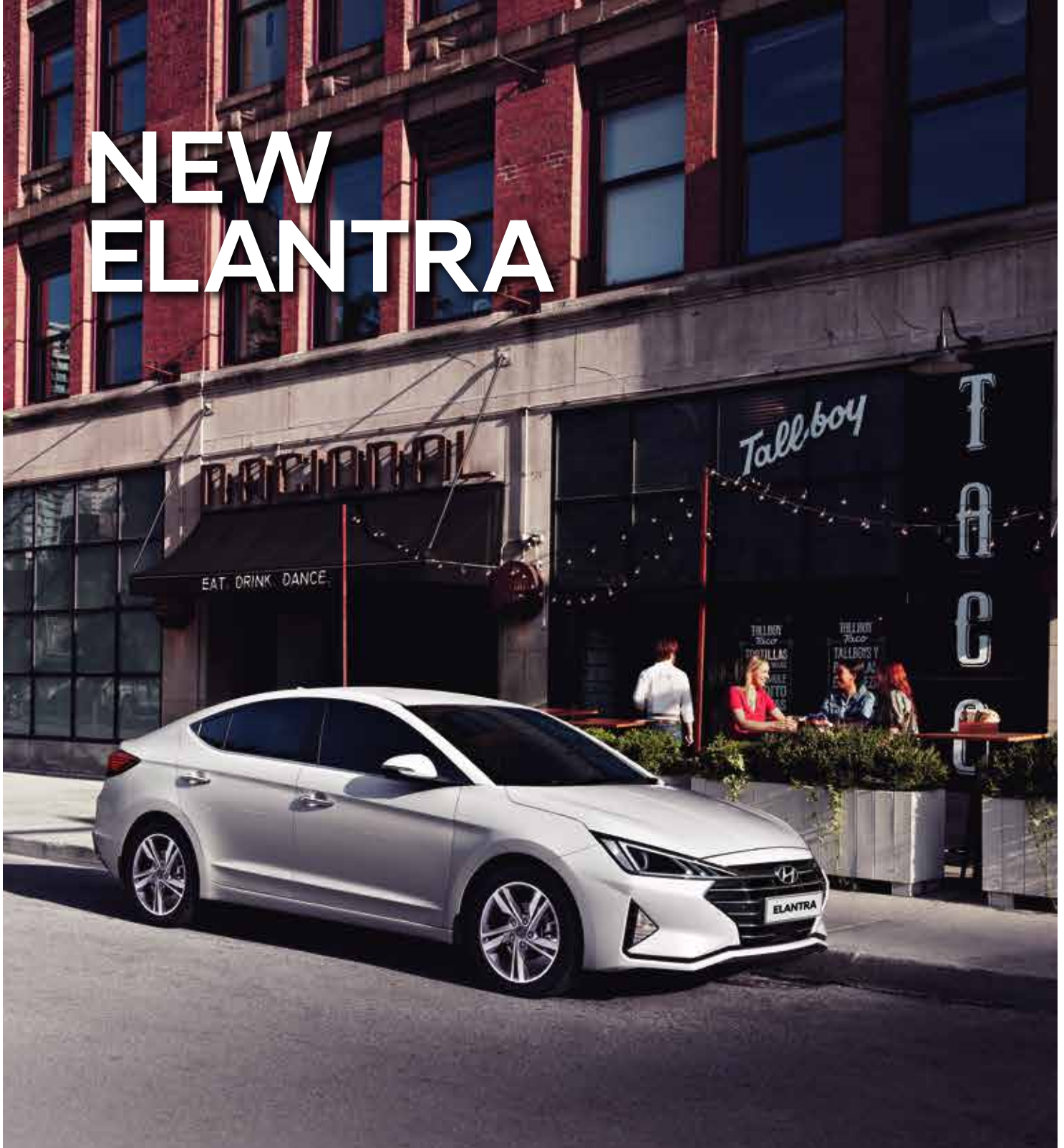


NEW ELANTRA



	Elantra 2.0 Executive
Engine	Nu 2.0 MPI
Displacement (cc)	1,999
Bore x Stroke (mm)	81 x 97
Compression Ratio	10.3
Max Power (PS/rpm)	152 / 6,200
Max Torque (Nm/rpm)	192 / 4,000
Transmission	6-Speed Automatic Transmission
Drive System	2-Wheel Drive
Drive Mode	Standard with Selection Display (Eco, Normal, Sport & Smart)

Picture is for illustration purpose only. Actual unit may differ. Terms and conditions apply.

Exterior Colours



Polar White Fluid Metal Fiery Red Teal Blue Phantom Black

Dimensions



Overall Width 1,800 Overall Length 4,620 Overall Height 1,450 Wheel Tread 1,558
 Wheel Tread 1,549 Wheel Base 2,700

Unit: mm

Specifications

ELANTRA 2.0 EXECUTIVE

SUSPENSION	
Front	McPherson Strut
Rear	Tubular Beam
BRAKES	
Front Brake Type	Ventilated Disc
Rear Brake Type	Solid Disc
WHEELS & TYRES	
Wheels	ALLOY 17"
Tyres	225/45 R17
Spare Tyre	Full 17" Rim
SAFETY & SECURITY	
Airbag	6 (Driver, Passenger, Front Sides & Curtains)
Anti-Lock Brake System (ABS)	Standard
Electronic Stability Control (ESC)	Standard
Hill-Start Assist Control (HAC)	Standard
Downhill Brake Control (DBC)	Standard
Brake Assist System (BAS)	Standard
Vehicle Stability Management (VSM)	Standard
STEERING	
Steering Type	MDPS (Motor Driven Power Steering)
Tilt & Telescopic	Manual Tilt & Telescopic
Leather Wrapped	Standard
EXTERIOR	
Door Handle	Chrome with Welcome Light
Headlamps	Projector Halogen
Rear Lamp	Standard
Fog Lamp	Standard
Reverse Light	Standard
Daytime Running Light & Positioning Light	LED
High-mounted Stop Lamp	Bulb
Outside Mirror Electric Control & Folding	Standard with Auto Fold & Unfold
Outside Mirror Side Repeater	Standard
INTERIOR	
Seats	Leather
Seat Adjuster	Manual
Rear Seat Folding System	6:4 Type
Supervision Cluster	3.5" TFT Mono LCD
Parking Brake	Hand Type
Inside Rear View Mirror	Day & Night
Power Window	4 Windows + Auto Up & Down (Driver)
AUDIO	
Audio System	7" Touchscreen LCD with Android Auto & Apple Car Play
Steering Wheel Audio Control	Standard
Connectivity	Aux + USB + Bluetooth with Voice Recognition
COMFORT & CONVENIENCE	
Smart Key with Start Stop Button	Standard
USB Port	2
Air Condition	Manual Air Conditioning
Rear Console Air Vent	Standard
Auto Light Control	Standard
Tyres Pressure Monitoring System	Standard
Smart Trunk	Standard
Head Lamp Levelling	Manual
Rear Parking Assist System	Standard
Rear-view Camera	Standard with Dynamic Parking Guide

*Specifications, colours and car may differ from those shown in the brochure, and are subject to change without prior notice. Some of the specifications illustrated may not be supplied as standard and may be available at extra cost. Smart phone connectivity is only applicable to selected models. Please check with your smart phone manufacturer regarding compatibility. The Android Auto application is only available in certain regions. Hyundai-Sime Darby Motors reserves the right to change the specifications and equipment without prior notice. The colour plates shown may vary slightly from the actual colours due to limitations of the printing process. Please consult your respective dealers for full information and availability of colours and trims.



The FREE 24/7 Roadside Assist* provides help such as on-site repair or towing services to Hyundai owners in case of accidents, vehicle breakdowns, parts malfunctions or flat tyres.
 *Terms and conditions apply.
 *Refer to 24/7 Roadside Assist leaflet for details



*Terms and conditions apply.

An exclusive warranty for all Hyundai users assures your Hyundai up to 300,000 km or 5 years, whichever comes earlier. Drive up to 164 kilometres a day for 5 years knowing that your Hyundai is cared for.
 *Terms and conditions apply

Authorised Distributor: Hyundai-Sime Darby Motors Sdn. Bhd. (222391-P)
 Customer Careline: 1300-13-2000 | Website: www.hyundai.com.my

