

KONA Electric





Pictures are for illustration purposes only. Actual units may differ. Terms & conditions apply.

Positive energy.

Everything about the new KONA Electric shows the power of positive thinking. You get cutting-edge design, a pure electric powertrain that provides up to 484km* of driving range plus a suite of advanced connectivity and safety features that will put you right on the vanguard of fashion and technology. Put the power of positive thinking into your daily with the new KONA Electric.



Flowing aerodynamic design with twin headlight design.



Aerodynamic 17" alloy wheel.



Impressive range*

KONA's high-capacity 64kWh battery give you ample driving range for daily commuting. The maximum driving range reaches up to 484km so you can drive confidently without worrying about recharging.



Quick acceleration*

KONA sprints from zero to 100km/h in just 7.9 sec! Unlike combustion engines, KONA's electric motor deliver 100 percent of its torque instantaneously for strong passing power and quick acceleration from a standstill.

*Only available on the e-Max variant.

Electric inside and out.

The KONA Electric's distinctive design is brought to life with clever integrated features. From the sleek exterior to the electrifying interior, the KONA Electric looks different because it is different.



Wireless phone charging system*.



Shift-by-wire (Electronic gear shift button).



Rapid charging

Just connect to a 100kW DC charging station and you can charge your KONA Electric from 10% to 80% state of charge (SOC) in approximately 47 minutes.



Fully digital 10.25" gauge cluster

The expanded capabilities of this new cluster start with the user-selectable display themes: Normal, Sport, Eco or Cube.



*Only available on e-Plus and e-Max variants.

Charging rate and time estimate varies based on a number of factors, including current battery charge level, output of the charging unit, vehicle and battery settings and outside temperature.



Pictures are for illustration purposes only. Actual units may differ. Terms & conditions apply.

Clean engineering.

Pure electric drive opens the door to a whole new world of simplicity. All-electric mobility means a steep reduction in the number of moving parts the main sources of mechanical noise and vibration. The KONA Electric's electric motor runs whisper quiet but perhaps best of all, it's inherently simpler, quicker and more reliable than a conventional petrol engine while generating absolutely zero emissions.

Lithium-ion polymer battery

The KONA Electric's lithium-ion polymer battery has a lower memory sensitivity and excellent charge efficiency compared to conventional batteries.

Electric motor

The 64 kWh battery is paired with an electric motor which delivers of 204 PS, while the 39.2 kWh battery comes with an electric motor delivering 136 PS.

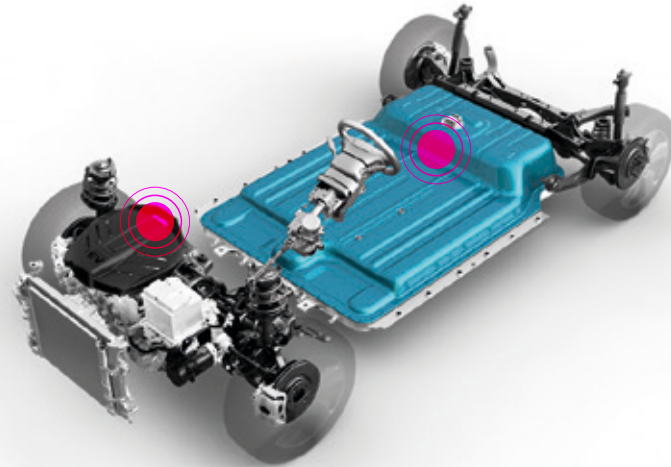
64kWh Battery*

Driving Range: 484km
Estimated Charging Time:
• 100kW DC = 80% state of charge in 47mins
• 11kW AC = 7.5 hours
• In-Cable Control Box (ICCB) = 31 hours
Max Speed: 167km/h
Max Power: 204PS



39.2kWh Battery**

Driving Range: 305km
Estimated Charging Time:
• 100kW DC = 80% state of charge in 47mins
• 11kW AC = 4.5 hours
• 7.2kW AC = 6.5 hours
• In-Cable Control Box (ICCB) = 22 hours
Max Speed: 155km/h
Max Power: 136PS

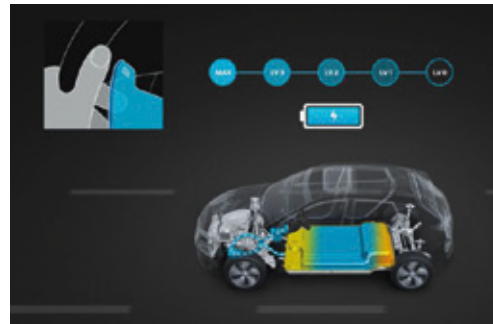


Maximise your range while driving with KONA Electric's regenerative braking systems which let you charge the battery by using the electric motor to slow the car.



Adjustable regenerative braking

Braking is optimised to get the most out of the recuperative braking system, helping KONA Electric maintain a healthy state of charge (SOC). The driver can easily adjust the level of regenerative braking through the paddle shifters.



1-paddle mode

It is also possible to actively brake the car using the paddle shifter. Simply pull the left paddle shifter and hold. You can slow the car to a complete stop in the way without pressing the conventional brake pedal.



Smart regenerative braking***

The Smart regenerative braking system utilizes the on-board radar sensor to automatically control the level of regenerative braking to react to the traffic ahead.

*Only available on the e-Max variant. **Only available on e-Lite and e-Plus variants. ***Only available on e-Plus and e-Max variants.
Charging rate and time estimate varies based on a number of factors, including current battery charge level, output of the charging unit, vehicle and battery settings and outside temperature.



Pictures are for illustration purposes only. Actual units may differ. Terms & conditions apply.

Bring your sense of adventure.

KONA's advanced control systems give you the confidence to drive down less travelled roads or in poor weather conditions. The large jog wheel on the centre console provides access to KONA's advanced electronic control systems: This jog wheel may look simple but it offers powerful features: With a quick turn and a click, KONA keeps you going, exploring and discovering.



Drive Mode

The Drive Mode selector offers a choice of four different settings to suit your personal preferences. Drive Mode automatically modifies the gear shift schedule to transform KONA's personality into frugal, fast or just plain normal.



ECO+

ECO+ Mode

An ultra power saving mode for when battery range is at a critical level. It restricts the climate control system and maximum vehicle speed in order to maximise driving range.



ECO

ECO Mode

Eco mode encourages efficient driving by prompting the driver to accelerate in an efficient manner. Climate control is also changed to Eco—heating and cooling are adjusted to consume less power when Eco mode is selected.



SPORT

SPORT Mode

Sport Mode is made for those times when you just feel like letting it go. With Sport Mode dialed in, KONA responds with energetic enthusiasm, the pace quickens and the fun begins.



NORMAL

NORMAL Mode

Normal is a happy place to be as it puts you at the half-way point between Eco and Sport. Offering the best of both, this setting delivers perfectly relaxed, everyday driving performance.

Hyundai SmartSense™

Hyundai's cutting-edge driver assistance system, built to provide you with more safety and peace of mind. From braking to avoid collisions, to detecting vehicles in your blind spot, SmartSense™ systems constantly monitor your environment to protect you from potential hazards while driving.



Smart Cruise Control (SCC) with Stop and Go*

While traveling a speed set by you, it uses radars to maintain a safe distance from the vehicle ahead. After the system slows the vehicle to a stop, it will reactivate if the vehicle in front moves within 3 seconds.



Forward Collision-Avoidance Assist (FCA)

If there's danger of a collision with a car, a pedestrian or even a cyclist*, FCA's front camera gives you an early warning and, if necessary, FCA automatically applies the brakes to prevent the collision.



Blind-Spot Collision-Avoidance Assist (BCA)*

BCA uses radar to monitor both of your blind spots. If a vehicle is detected in the blind spot while the turn signal is flashing, BCA will automatically apply left or right side front braking before your attempted lane change thus helping you avert an unsafe lane change and a potential collision.



Safe Exit Alert (SEA)*

This pioneering innovation may sound an alert when a vehicle approaches from behind, letting passengers know it may not be safe to open the door to exit the vehicle.



High Beam Assist (HBA)

Scans the road ahead for oncoming headlights, then automatically adjusts your headlamp range, switching between high and low beam as necessary.



Lane Keeping Assist (LKA)

Your vehicle warns you through audio and visual cues if your vehicle drifts out of its driving lane without signalling. If necessary, it will gently apply corrective steering assistance to keep you inside the lane.

Driver Attention Alert (DAW) with Leading Vehicle Departure (LVDA)

DAW monitors your driving patterns to detect driving. If detected, it alerts you with sound cue coupled with a warning message on the instrument cluster. During a stop, LVDA will alert you if the leading vehicle departs.

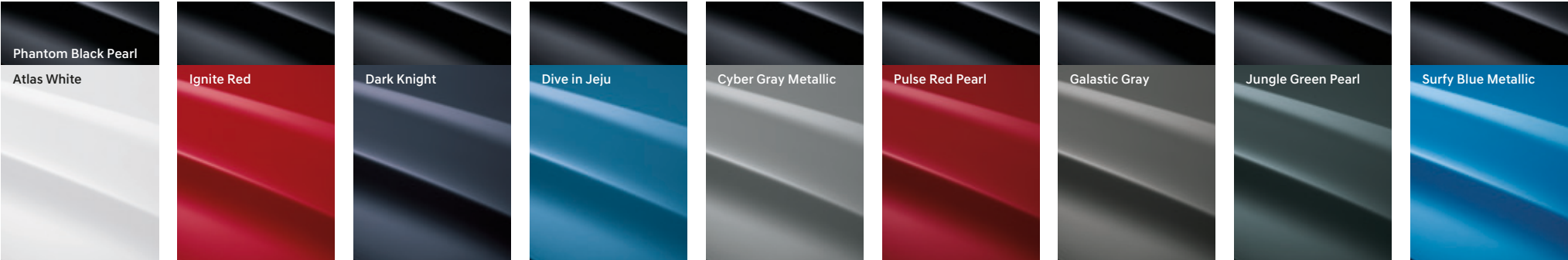
Lane Following Assist (LFA)

Using the front-view camera to detect lane markers on the road, this feature assists the driver's steering to help keep the vehicle centred inside the lane.

*Only available on e-Plus and e-Max variants.

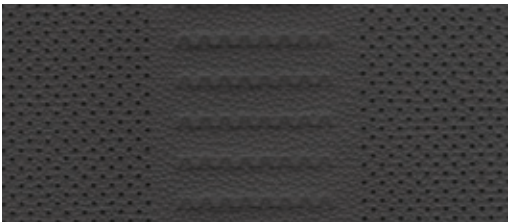
2-tone exterior colours

Roof and pillars

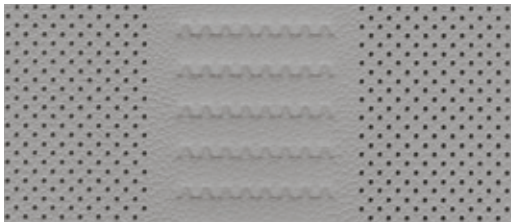


Body

Interior colours



Leather - Black



Leather - Grey



Front Wheel Tread - 1,559

Overall Width - 1,800



Wheel Base - 2,600

Overall Length - 4,205

Overall Height

1,570



Rear Wheel Tread - 1,568

Unit: mm

Specifications

Type	39.2kWh e-Lite	39.2kWh e-Plus	64kWh e-Max
Drive Train			
Motor Type	Permanent Magnet Synchronous Motor (PMSM)		
Battery Capacity	39.2kWh		64kWh
Battery Type	Lithium-ion-Polymer		
Max Power (PS/rpm)	136		204
Max Torque (Nm/rpm)	395		
Max Speed (kmh)	155		167
Acceleration Sport Mode (0 - 100 kmh)	9.9 seconds		7.9 seconds
Drive System	Single Speed Reduction Gear (Front Wheel Drive)		
Drive Mode	4 (Eco+, Eco, Normal, Sport)		
All Electric Range (KM)	305km (WLTP)		484km (WLTP)
Charger Type	Type 2(AC) / CCS2(DC)		
Estimated Charging Time	6.5 hours (AC: 7.2kW)	4.5 hours (AC: 11kW)	7.5 hours (AC: 11kW)
Estimated Rapid Charging Time (10% - 80% SOC)	47 minutes (DC: 100kW)		
Suspension			
Front	MacPherson Strut		
Rear	Multilink		
Brakes			
Front Brake Type	Ventilated Disc 16"		
Rear Brake Type	Solid Disc 16"		
Wheels & Tyres			
Wheels	Alloy 17"		
Tyres	215/55 R17		
Safety & Security			
Airbag	6 (Driver, Front Passenger & Side)		
ABS, ESC, VSM, BAS, TCS	Equipped		
Hill-Start Assist Control (HAC)	Equipped		
Parking Assist System	-		
Seat Belt Reminder	5 (Both Front and Rear Seat)		
ISOFIX	2 (Rear Passenger)		
Hyundai SmartSense™			
Lane Keeping Assist (LKA)	Equipped		
Lane Following Assist (LFA)	Equipped		
Leading Vehicle Departure Alert (LVDA)	Equipped		
High Beam Assist (HBA)	Equipped		
Driver Attention Warning (DAW)	Equipped		
Rear Occupant Alert (ROA)	Equipped		
Blind-spot Collision-Avoidance Assist (BCA)	-	Equipped	
Rear Cross Traffic Collision-Avoidance Assist (RCCA)	-	Equipped	
Smart Cruise Control with Stop & Go (SCC w S/G)	-	Equipped	
Forward Collision-Avoidance Asisst (FCA)	Vehicle/Pedestrian	Vehicle/Pedestrian/Cyclist	
Safe Exit Alert (SEA)	-	Equipped	
Audio			
Audio System & Connectivity	8" Touchscreen with MP3 playback, AUX-in, USB, Bluetooth, wireless Apple CarPlay®, Android® Auto with Voice Recognition		
Speakers	6 Speakers		
Steering Wheel Audio Control	Equipped		
Steering			
Steering Type	Rack & Pinion (C-MDPS)		
Tilt & Telescopic	Standard		

Type	39.2kWh e-Lite		39.2kWh e-Plus	64kWh e-Max
Dimensions / Capacity				
Overall Length	4,205			
Overall Width	1,800			
Overall Height	1,570			
Wheel Base	2,600			
Ground Clearance	157			
Cargo Area(VDA) (minimum / maximum)	332L / 1114L			
Curb Weight (Lightest)	1,535kg		1,685kg	
Curb Weight (Heaviest)	1,593kg		1,743kg	
Gross Vehicle Weight	2,020kg		2,170kg	
Coefficient of Drag	0.29			
Exterior				
Headlamps	MFR (LED)			
Tail lamps	LED			
LED Daytime Running Light	Equipped			
Foglamps	Rear only			
Outside Mirror Electric Control & Folding	Equipped			
Roof Rack	Equipped			
Two-Tone Body Color	Equipped			
Interior				
Seats Materials	Leather			
Seats Adjustment	Driver & Front Passenger (Manual)		Driver (10 ways electric adjustment), Front Passenger (8 ways electric adjustment), Front seat with 3-step heated and ventilated for Max only	
Roof lining	Grey			
Sunglass Holder	Equipped			
Rear Seat Folding System	60 : 40 split back folding			
Supervision Cluster	10.25 inch Digital Cluster			
Parking Brake	Electronic Parking Brake with Auto Hold			
Inside Rear View Mirror	Electronic Chromic Mirror (ECM)			
Air Conditioning System	Single Zone Full Automatic			
Power Window	4 Windows, Driver's and Front Passenger Side Auto Up and Down with Anti-Pinch			
Comfort & Convenience				
Smart Key with Push Start Button	Equipped with Remote Start			
Shift-by-wire (Electronic Shift System)	Equipped			
Paddle Shifter (Regenerative Braking Control)	Equipped			
USB Port	3 (2 for charging, 1 for connectivity)			
Auto Light Control	Equipped			
Auto Wipers	Equipped			
Rear-View Camera	Equipped with dynamic parking guide			
Advance Tyres Pressure Monitoring System	Equipped			
Cup Holders	2 Front, 2 Rear			
Navigation	Waze/Google Map (Android Auto/Apple CarPlay)			
Head Up Display (HUD)	-		Equipped	
Wireless Phone Charging System (WPC)	-		Equipped	

- Specifications, colours, and car shown may differ from those in the brochure and subject to change without prior notice.
- Some of the specifications illustrated may supplied as standard and may be available at extra cost.
- Smartphone connectivity is only applicable to selected models. Please check with your smart phone manufacturer regarding to the compatibility.
- Android® Auto application is only available in certain region.
- Hyundai-Sime Darby Motors reserves the right to change the specifications and equipments without prior notice.
- The colour plates shown may very slightly from the actual colours due to limitations of the printing process.
- Please consult your respective dealers for full information and availability on colours and trims.

Pictures are for illustration purposes only. Actual units may differ. Terms & conditions apply.

Dealer stamp